

The LEGO logo is prominently displayed in the top left corner, featuring the word "LEGO" in its signature white font with a yellow outline, set against a red square background.The title "LEGO Club Magazine" is written in a large, stylized black font across the top of the page. The word "LEGO" is the largest, followed by "Club" and "Magazine" in slightly smaller sizes. A red LEGO brick is integrated into the letter "o" of "Club".

BIONICLE®

Secrets of the
super vehicles!

AGENTS

Action in the Mobile
Command Center!

CASTLE

Beware the
Troll
Warship!



LEGO Club Magazine, Box 1125, Danvers, VT 05185-1125

Presorted Standard
U.S. Postage
PAID
LEGO Direct

July 2012

 www.LEGOclub.com

FEATURED IN THIS ISSUE:

CHECK OUT WHAT'S NEW AT
www.LEGOclub.com!



Page 4



Page 10



Page 18



Page 22



There's always lots of new and cool stuff to see and do on the LEGO Club website!

- ALL NEW! LEGO Club TV videos!
- ALL NEW! Enter the new "Max's Mission" Contest!
- Submit your LEGO Cool Creations photos!
- Exclusive Building Instructions and Building Tips from LEGO Master Builders and fans like you!
- Check out new LEGO News stories!
- Meet another Networker from My LEGO Network!
- LEGO Event Calendar – find out about LEGO fun in your area -- and more!

LEGO Club Magazine™ Exclusive - use Club Code: **MAGAWARD** to get a special award for your My LEGO Network page!

clubcode
MAGAWARD



MAX'S MISSION!

This month, Max's Mission is so top secret we can't even tell you what it is here. Check it out on www.LEGOclub.com to find out where you'll find the clues and what you will be building this time!

clubcode
MAXMISSION

LEGO® TV COMES TO COMCAST!

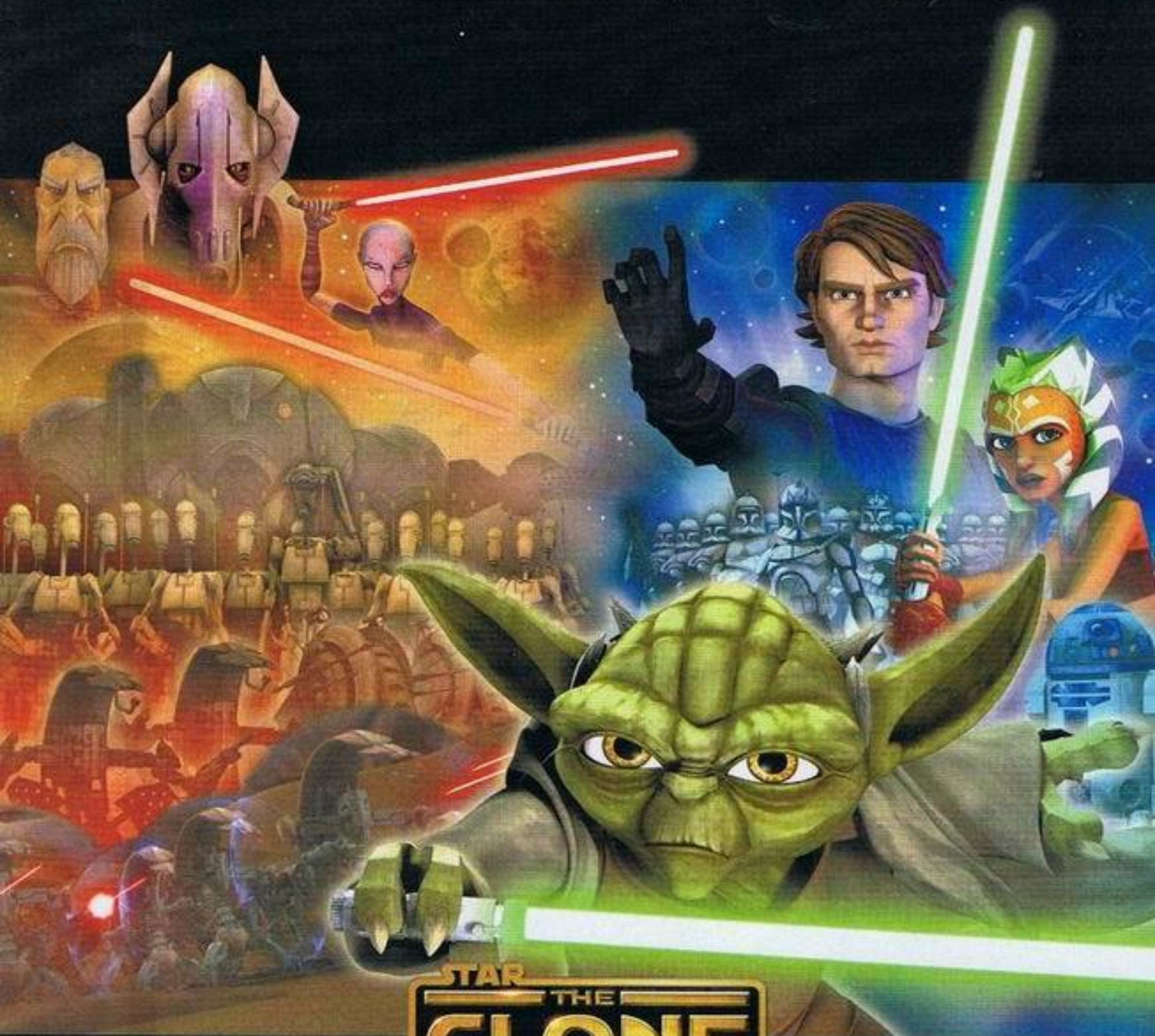


Exciting LEGO videos are coming to Comcast ON DEMAND starting this month! You can check them all out - including LEGO Indiana Jones and BIONICLE mini-movies, LEGO Club TV episodes, and more - by turning your TV to the Comcast ON DEMAND channel. Go to "Kids" on the menu, then "Activity TV," and then "LEGO TV." Or watch the videos online at:

www.LEGOclub.com

AVAILABLE November 2008 - January 31, 2009 only!

FOR EVERY BATTLE, A HERO. FOR EVERY DECEPTION, A VILLAIN.
FOR EVERY STAR, A STORY.



STAR
THE
**CLONE
WARS**
WARS™

NEW ADVENTURES EVERY FRIDAY AT 9PM E/P



CARTOON NETWORK

IMAGINE

POWER TIMES TWO!

DEEP in the heart of the Karda Nui swamp, the Toa Nuva have discovered amazing and powerful new vehicles. The Rockoh T3 and the Axalara T9 are Fast, Formidable, and may be the keys to victory in the battle against the evil Makuta!

AXALARA T9

Toa Lewa's craft is the most powerful in the air, with multi-weapon functions, thick hull armor, and a cockpit designed to directly feed sensor information to the pilot. While not as fast as the Rockoh, it packs a much stronger punch and can take a lot more damage.



Kanohi mask with targeting heads-up display

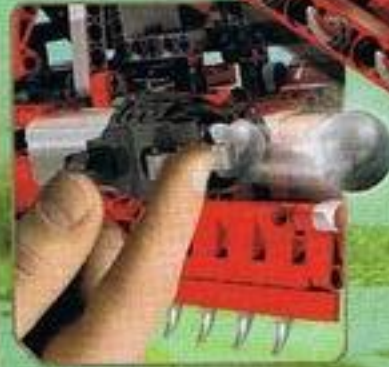
Blaster cannon

Double-reinforced, 24 inch thick protosteel armor

T9 engine with maximum 7 million pounds of thrust

"Smart" cockpit

Tri-arms equipped with lasers and Force Field capacitors



Reinforced body
for ramming

"Smart"
cockpit

Kanohi mask with targeting
heads-up display

T3 engine with a
maximum 2.5 million
pounds of thrust

Protosteel armor

Retractable
wings

Cannon compartments
open and close

ROCKOH T3

Piloted by Toa Pohatu, the Rockoh T3 is designed for both strength and speed. Its combination power dive and ram attack can be devastating, even against multiple enemies. Highly maneuverable, the Rockoh can swerve in and around the huge trees in the swamp – or smash right through them.

Dual blaster
cannons

Learn more secrets of the super
vehicles at

www.BIONICLE.com

IMAGINE



INDIANA JONES

ESCAPE FROM THE KINGDOM OF THE CRYSTAL SKULL!



SO...WHAT DO WE DO NOW?



EASY! WE HIKE THROUGH THE JUNGLE, FIND OUR WAY BACK TO CIVILIZATION, AND GO HOME.

BUT WHAT ABOUT MUTT AND PROFESSOR OKLEY?



OH, THEY'RE HANGING AROUND HERE SOMEWHERE.



THIS ISN'T AS EASY AS IT LOOKS...

EVERYTHING OKAY BACK THERE, OX?



INDY, SOMETHING'S COMING—EEK!

SHHH!



I DON'T KNOW. I'M PRETTY SURE WE LEFT A PIECE OUT...

GOOD THING WE FINALLY GOT THE JUNGLE CUTTER PUT BACK TOGETHER, OR WE'D NEVER GET OUT OF THIS PLACE.



HEY, DON'T YELL AT ME. I'M NOT THE ONE WHO LOST THE INSTRUCTIONS.



C'MON UP, MARION! I JUST GOT US OUR RIDE OUT OF HERE.

WHY DO I ALWAYS END UP COVERED IN BUGS WHEN I'M WITH YOU, INDIANA JONES?



NOW THIS IS THE WAY TO TRAVEL!

LOOKS LIKE ANOTHER ADVENTURE ALL WRAPPED UP.



NOT UNTIL I'VE HAD MY REVENGE!

IT'S NOT OVER YET, DOCTOR JONES...



HEY, COLONEL. I SEE YA BROUGHT SOME FRIENDS ALONG.

WHAT? AIGH!



NOT AGAAAIN!

WHAT DO YOU THINK THIS WAS FOR?

PROBABLY NOTHING IMPORTANT.



OF COURSE, I'VE BEEN WRONG BEFORE.



HEY, I SAID I WAS SORRY!

WELL, I HOPE YOU CAN SWIM BETTER THAN YOU NAVIGATE, BECAUSE WE'RE LOST!



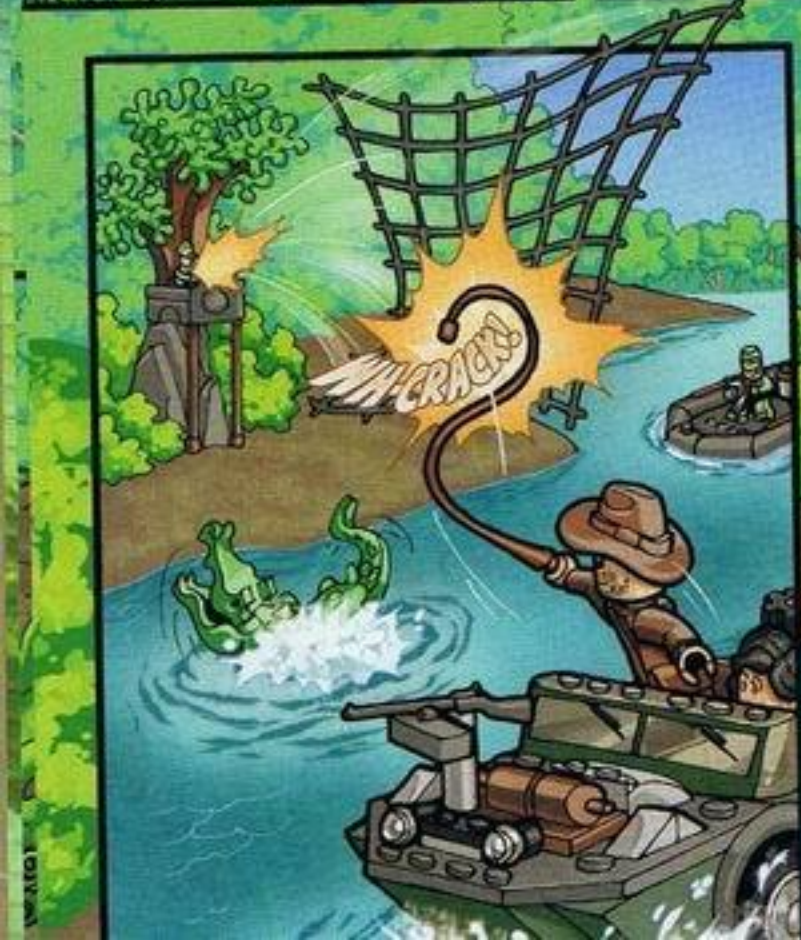
THEN AGAIN, MAYBE YOU WON'T HAVE TO!

THAT'S A LUCKY BREAK.

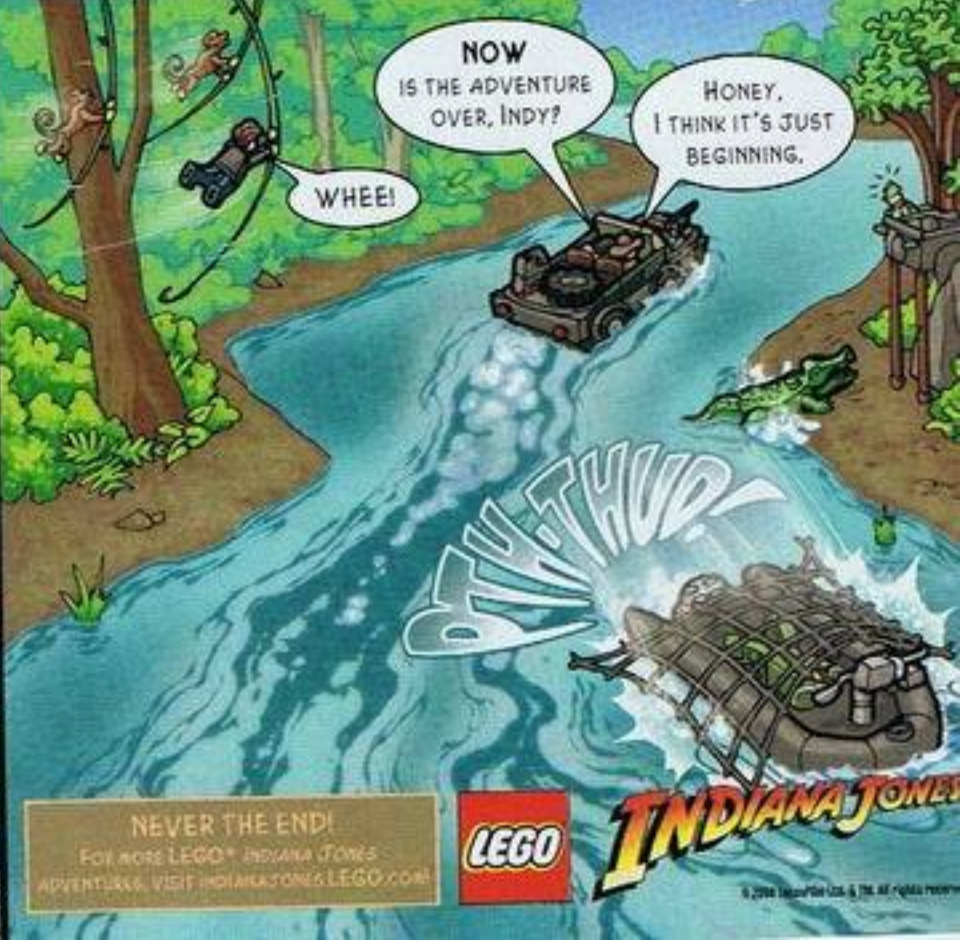


FINALLY, WE'RE SAFELY ON OUR WAY HOME.

HOLD THAT THOUGHT...



CRACK!



WHEE!

NOW IS THE ADVENTURE OVER, INDY?

HONEY, I THINK IT'S JUST BEGINNING.

NEVER THE END!
FOR MORE LEGO® INDIANA JONES ADVENTURES, VISIT INDIANAJONES.LEGO.COM



INDIANA JONES

© 2008 LEGO Group. All rights reserved.

Planning a cross-ocean voyage? Use the 4997 Transport Ferry to get there in comfort and style - it's packed with realistic details and moving parts! Just drive up the rear ramp and get ready to cruise. When you reach the other side of the sea, the turn of a gear opens the front of the boat and deploys the landing ramp for an easy drive onto shore! ■

ALL ABOARD THE TRANSPORT FERRY!



Includes instructions for rebuilding into a hovercraft or cargo plane!



Radar and radio antenna - just like the real thing!

Lifeboat for emergencies!

Captain's control cabin!

16" long and 5" wide!



Lower the back ramp to load up cargo, then raise it to set sail!



Turn the gear to open the front, lower the bridge and drive onto shore!

The ferry service between Rocky Hill and Glastonbury, Connecticut started in 1655 and only stops when the river freezes over.

In 1811, the world's first steam-powered ferry began to carry passengers from Hoboken, New Jersey to New York City and back.

FERRY FACTS:

The Mersey River in England may have had a ferry line between Liverpool and Birkenhead over 800 years ago.

LEGO CREATOR

Visit www.lego.com/creator for more building fun!



www.lego.com

IMAGINE

TAKE COMMAND!

It's the most important LEGO Agents mission yet! Our top agents have finally captured Dr. Inferno and locked him up in our top-secret mobile headquarters. Somehow, his henchmen have found out where he is, and they've launched an all-out attack on the Mobile Command Center to break him out!

We're going to need every super-spy vehicle and gadget we have to win, and that means you need to know all about the Mobile Command Center's secrets and classified technology. You never know what hidden surprise might save the day.

Good luck, Agent! 🍀



8635 MOBILE
COMMAND
CENTER

Air Hunter Z-14
homing missiles.

Mission briefing
projector screen.

Swing-wing
Dart Interceptor
mini-jet.

QARK-II sonic
disruptors.

High-intensity Gilgamesh-80
laser cannons.

High-speed X-1
all-terrain vehicle.



DISGUISED
TRANSPORT MODE

LEGO AGENTS

Next-generation communications and tracking array

Security cell with electrified stun-bars

Vehicle deployment crane

Eagle Ray speedboat and H-20 stealth hydro-jet



AGENT CHASE

Top field agent, team leader and hazardous mission specialist.



AGENT FUSE

Computer, electronics and explosives specialist.



DR. INFERNO

Maniacal mastermind and evil genius who schemes to take over the world.



SPY CLOPS

Cyborg spy with mechanical spider legs and all-seeing robotic eyes.



AGENT CHARGE

Sea, air and land vehicle pilot and engineering systems specialist.



AGENT TRACE

Security, decryption and undercover-mission specialist.



GOLD TOOTH

Sneaky henchman obsessed with gold – and anything else shiny.

For more missions visit
<http://agents.LEGO.com!>

You've never seen a LEGO Technic truck like this before! The advanced and power-packed 8297 Off-Roader is big, tough, and ready to go anywhere you want it to. And thanks to its electric Power Functions, it's even more like the real thing!

IMAGINE

OFF-ROAD POWER!



OFF ROAD-INSPIRATION

Influenced by real-life vehicles!

LEGO **TECHNIC**

+ **POWER
FUNCTIONS**

HEAVY HAULER

Power Functions winch to tow major cargo!

LIGHT UP THE NIGHT

Working LED headlights illuminate the way on any terrain!

RISE ABOVE IT ALL

Adjust the ground clearance with the flick of a switch!

BACK DOWN TO EARTH

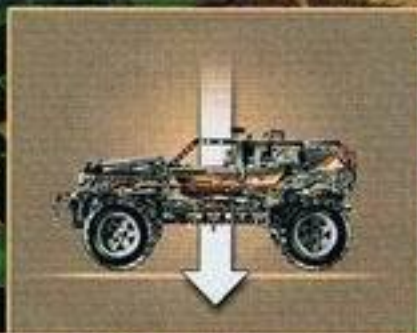
Motorized suspension raises and lowers the truck.

ALTERNATE MODEL

Rebuilds into a rugged buggy!

ALL ABOARD

Hydraulic-powered gull-wing doors and opening hood and trunk!



<http://technic.lego.com>



COOL CREATIONS

Got an awesome model of your own you would like to see in Cool Creations? Then send your photos to:

LEGO club

COOL CREATIONS
P.O. BOX 1308
ENFIELD, CT 06083-1308

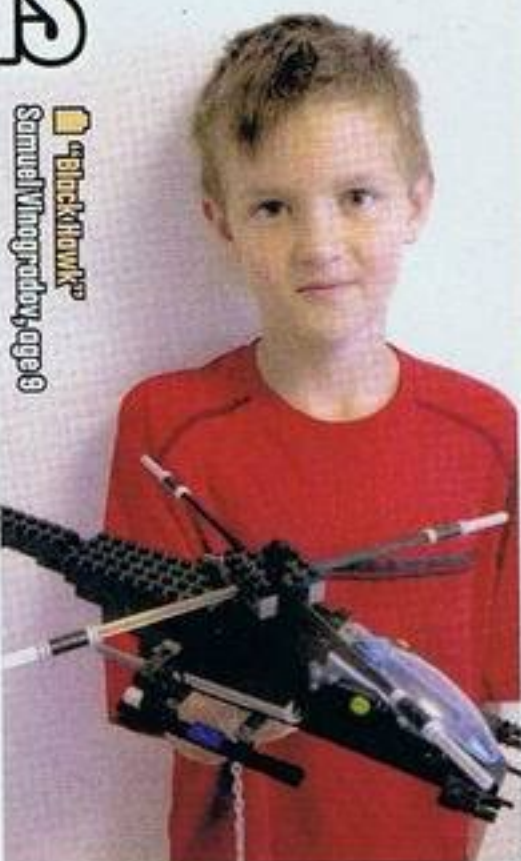
Remember to include your name, address, and the name of your model. No Polaroids please! Pictures will not be returned, so remember to take an extra photo for yourself!

Check out more completely creative LEGO models
www.LEGOclub.com

clubcode
COOLCREATIONS



"Mission San Diego"
Nickolas Griesbach, age 9



"Blackhawk"
Samuel Vinogradov, age 9



"The Lodge"
Ty Thompson, age 11 1/2



"Command Central"
Garrett Olerud, age 9



"Transportation Cruiser"
Stephen Risso, age 9

Hayden Maxwell, age 14



LEGO® CREATOR BUILD-A-DINO CHALLENGE WINNERS!

Jenna Perrodin, age 16, Patch Perrodin, age 14, Carol Perrodin, age 12, and Quentin Perrodin, age 9

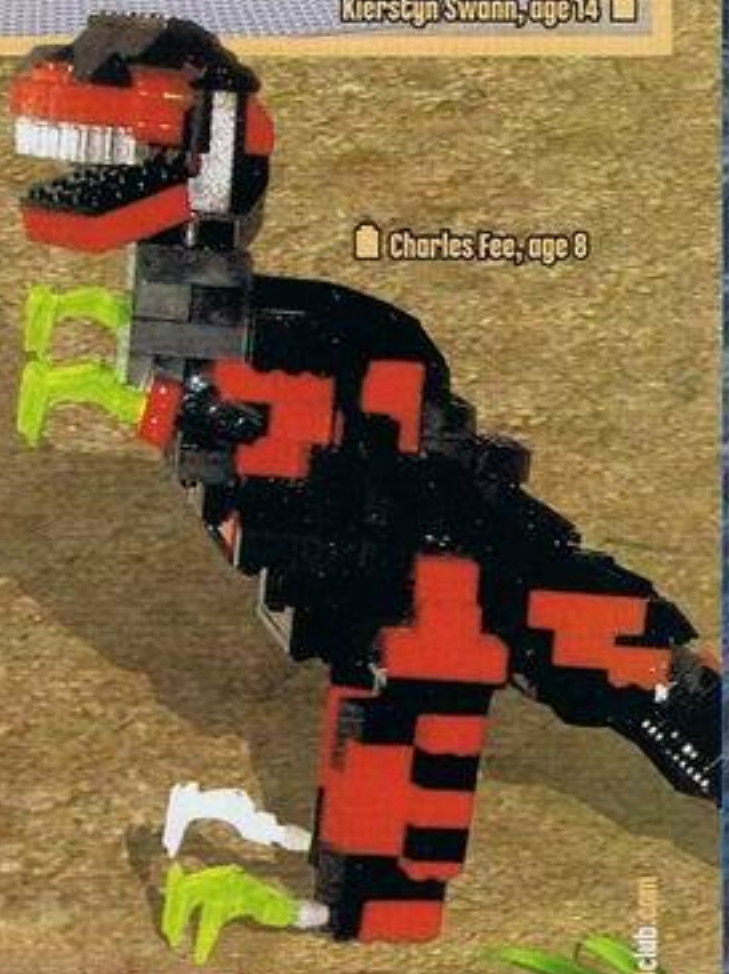


Kierstyn Swann, age 14



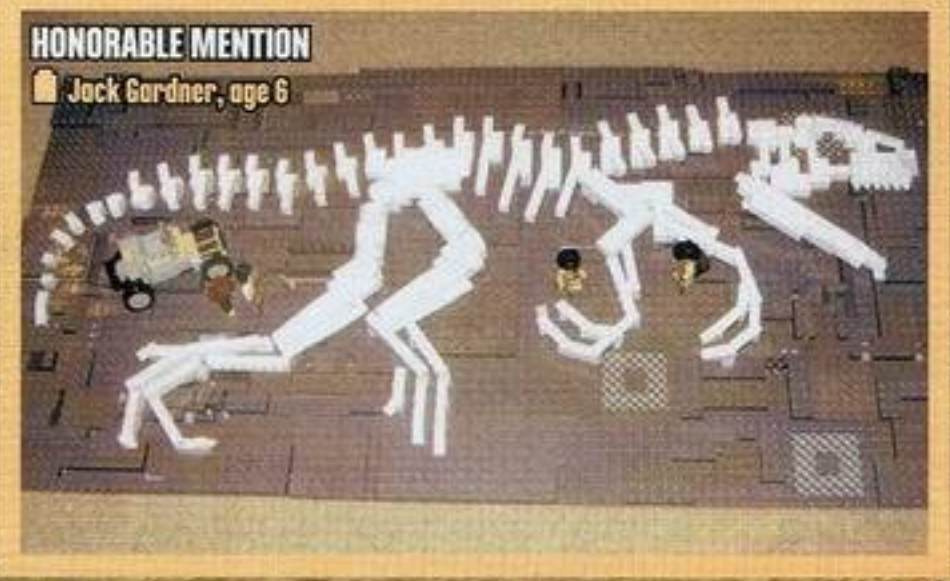
Kevan Romero, age 15

Charles Fee, age 8



HONORABLE MENTION

Jack Gardner, age 6



LEGO CREATOR

COAST GUARD RESCUE QUEST!

When there's trouble at sea, the LEGO City Coast Guard is there! The Patrol Boat has just rescued a stranded surfer... but a big storm has appeared keeping the team away from the safety of the Coast Guard Tower!

Help the Patrol Boat Find its way back to the tower, but watch out for the storm and other ocean nasties!

START



7738 Coast Guard
Helicopter and Raft

FINISH

7739 Coast Guard
Patrol Boat and
Tower

LEGO CITY

TROLL WARSHIP AHOY!

Beware the red sails of the Troll Warship! The greedy trolls have sailed across the sea to attack the kingdom and loot the castle of all its treasures. The brave knights and dwarves have joined Forces to battle them, but can they defeat the evil warriors and their mighty warship?

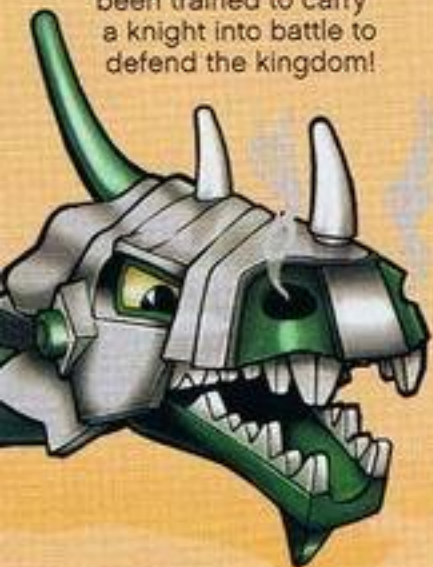
DRAGON KNIGHT

It takes lots of practice at falling from high places to learn how to ride a flying dragon. Only the king's bravest knights are chosen for this daring job!



DRAGON

Wearing specially-made armor forged by the finest dwarf blacksmiths, this fire-breathing dragon has been trained to carry a knight into battle to defend the kingdom!



For King and Castle!

Launch torches!

Yo ho, yo ho, a pirate's life -- whoops, wrong story. Never mind.

Oops, I'm allergic to dragons!
Good luck with the fight, guys!

I'm getting airsick ... or seasick ... or both!

Drum faster! Row harder!

It time for lunch break yet?

"Be a troll warrior," my mother said. "There's no future in rowing." But did I listen? No!

For more adventure, visit <http://castle.LEGO.com!>

LEGO Castle



CASTLE SHIP BUILDING CHALLENGE!

TO ENTER:

- 1 Build a LEGO Castle-style ship or other sea vehicle using pieces from your LEGO® brick collection.
- 2 Send us a color photo of your model. Only photographs and glossy photo-quality print-outs will be accepted. No Polaroids, please!
- 3 Write an essay of 100 words or less telling us about your ship. Who built it? What does it do? How will it battle the Troll Warships?
- 4 Include your name, age, complete mailing address and day-time phone number on your essay. Mail your photo and essay to:

LEGO® CASTLE SHIP BUILDING CHALLENGE
P.O. BOX 1625
ENFIELD, CT 06083-1625

NO PURCHASE NECESSARY. All entries must be received by midnight EST January 1st, 2009. Offer void where prohibited or restricted by law. Models must be constructed using only LEGO® pieces. Employees of LEGO Systems, Inc. ("Sponsor") and its affiliates and subsidiaries, advertising/promotions agencies and their immediate families are not eligible to participate. Entries will be judged based on originality (40%), creativity (40%) and essay (20%). Five (5) first prize winners will be selected from all eligible entries. Estimated total retail value of each prize \$100.00. All winners will be notified by regular US mail. Sponsor reserves the right to substitute prizes of equal or greater value. LEGO Company and its affiliates and subsidiaries are not responsible for late, lost, misdirected, mutilated or damaged entries. All entries become the property of Sponsor and will not be returned. By participating in this contest, entrants agree to be bound by the official rules and decisions of the judges. By acceptance of prize, winners consent to the use of their name/ likeness/entry materials in any manner by Sponsor for advertising/promotion without further compensation unless prohibited by law. By accepting any prize, winners agree to hold the Sponsor harmless against any and all claims, damage, injury caused or liability related to the administration of this contest, participation in this promotion, and/or the use or redemption of a prize.

Troll Warships are attacking, and the King needs YOU to defend the kingdom by building a mighty ship to fight them! Use your LEGO brick collection to create a sea vehicle for the Knights or Dwarves. Our 5 favorites will appear in the March issues of LEGO Club Magazine and LEGO BrickMaster Magazine... and win a \$100 LEGO gift card!

Entries must be received by January 1st, 2009!

LEGO Castle

CAN ANYTHING STOP THOSE TROLL WARSHIPS?

I SURE HOPE SO, OR THE KINGDOM'S IN BIG TROUBLE!