

The LEGO logo is prominently displayed in the top left corner, featuring the word "LEGO" in its characteristic white, bold, sans-serif font with a black outline, set against a red square background.The "LEGO Club" logo is centered at the top, with "LEGO" in a large, white, stylized font and "Club" in a smaller, white, rounded font. Below it, the word "MAGAZINE" is written in a black, blocky font. A red LEGO brick icon is integrated into the letter "b" of "Club".

**AGENTS**  
All-new secret  
super-agent  
missions and  
action!

**LEGO®**  
**STAR WARS™**

Meet the newest mini-figures  
in the LEGO Star Wars™ universe!



**LEGO BATMAN™**

Batman™ tackles The Joker™  
in an all-new adventure!

July - August 2008

 [www.LEGOclub.com](http://www.LEGOclub.com)

Presorted Standard  
U.S. Postage  
PAID  
LEGO Direct

LEGO Club, P.O. Box 1107, Englewood, CO 80155-1107

FEATURED IN THIS  
**ISSUE:**



Page 5



Page 14



Page 16



Page 24

CHECK OUT WHAT'S NEW AT  
**www.LEGOclub.com!**



There's always lots of new and cool stuff to see and do on the LEGO Club website!

- ALL NEW! LEGO Club TV videos!
- ALL NEW! Enter the "Max's Mission" Contest!
- Submit your LEGO Cool Creations photos!
- Send in your ideas for the Comic Caption contests!
- Exclusive Building Instructions and Building Tips from LEGO Master Builders and fans like you!
- LEGO News stories – hear from two Space-crazy fans whose LEGO Factory creations got made into real sets!
- Meet a Networker from My LEGO Network!
- LEGO Event Calendar – find out about LEGO Fun in your area – and more!

LEGO Club Magazine™ Exclusive – use Club Code: **MAGAWARD** to get a special award for your My LEGO Network page!

**clubcode**  
**MAGAWARD**



- Find a Club Code in your magazine (there are 2 codes on this page!)
- Visit [www.LEGOclub.com](http://www.LEGOclub.com)
- Click in the Club Code space
- Type the code in all CAPITAL LETTERS
- Hit your "Enter" key or click on 

## MAX'S MISSION!



**clubcode**  
**MAXMISSION**

HEY, LEGO CLUB MEMBERS! THE AGENTS NEED A NEW AIR VEHICLE, AND WE WANT YOU AND MAX TO HELP US BUILD IT!

WE'VE GOT A SECRET MISSION, GANG! GO TO [WWW.LEGOCLUB.COM](http://WWW.LEGOCLUB.COM) AND ENTER CLUB CODE: **MAXMISSION**. YOU'LL FIND A LIST OF CLUES TO HELP YOU FIGURE OUT WHAT KIND OF VEHICLE TO BUILD, AND DETAILS ON HOW YOUR MODEL MIGHT BE FEATURED IN A LEGO CLUB NEWS STORY!



You'll find all this and more at  
**www.LEGOclub.com**

**LEGO****INDIANA JONES™**

Upload your LEGO®  
Indiana Jones™ creations to  
[IndianaJones.LEGO.com/gallery/](http://IndianaJones.LEGO.com/gallery/)!

IMAGINE

**5 NEKAS****4 TOAB**

# RIVER CHASE RIDDLE!

**S**oldiers are chasing Indiana Jones and Marion down the river...and they've lost the Crystal Skull somewhere in the jungle!

Unscramble the mixed-up words hidden throughout the page (hint: each word describes something nearby) and write them in the answer spaces below. Each word has one or more letters with a number underneath. Spell out the letters in the same order as the numbers below them to discover an exclusive Club Code that you can use on [LEGOclub.com](http://LEGOclub.com) for a special LEGO® Indiana Jones™ reward!

**LEGO INDIANA JONES™  
VIDEO GAME CHEAT CODES!**

vj37wj Unlock Sherpa Brawler  
veo291 Unlock Belloq Priest

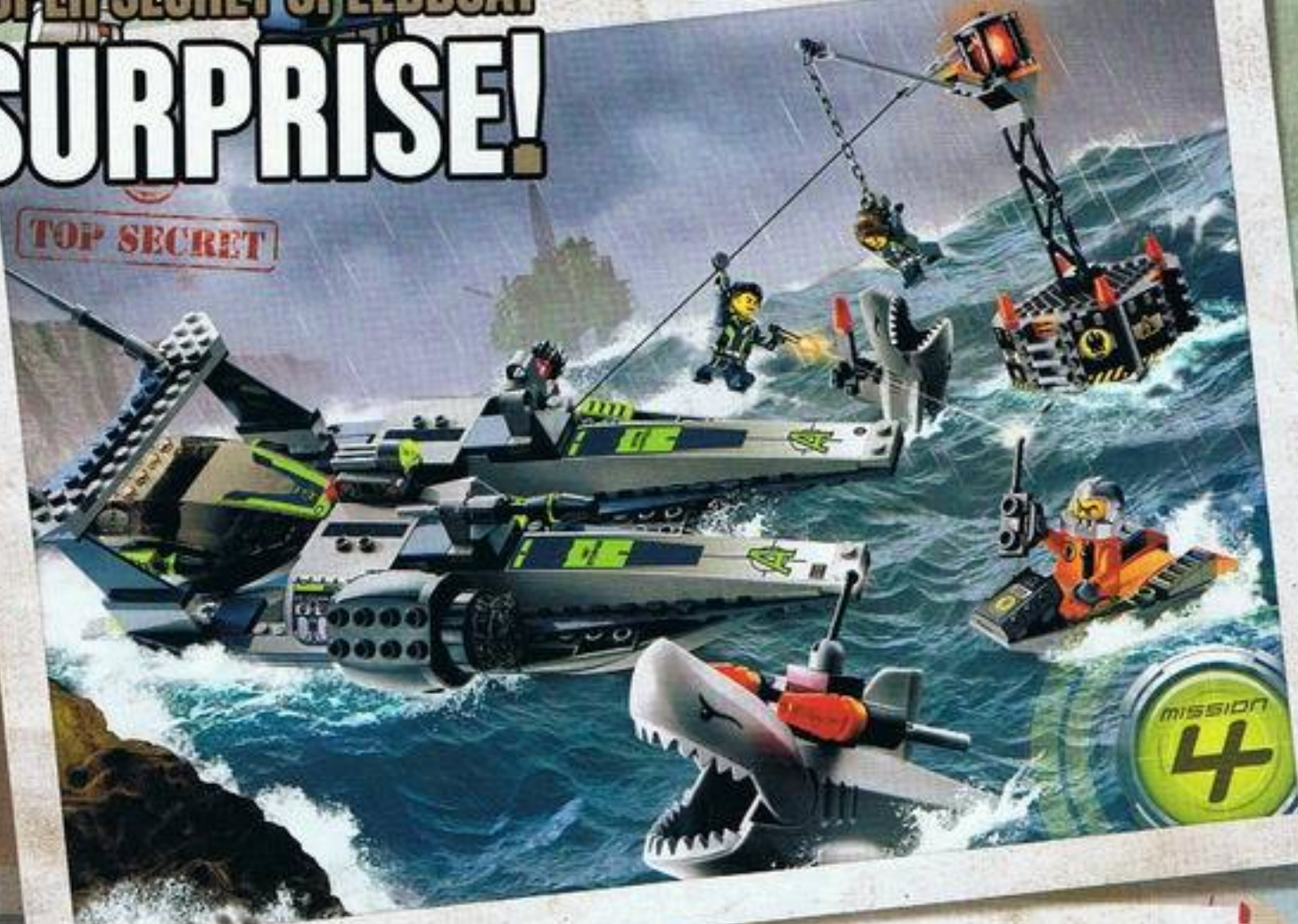
**6 KLULS****3 OCROEDCIL****1 ENT****2 DAINANI****clubcode**

**SDCC**  
JULY 2008  
BOOTH 2813

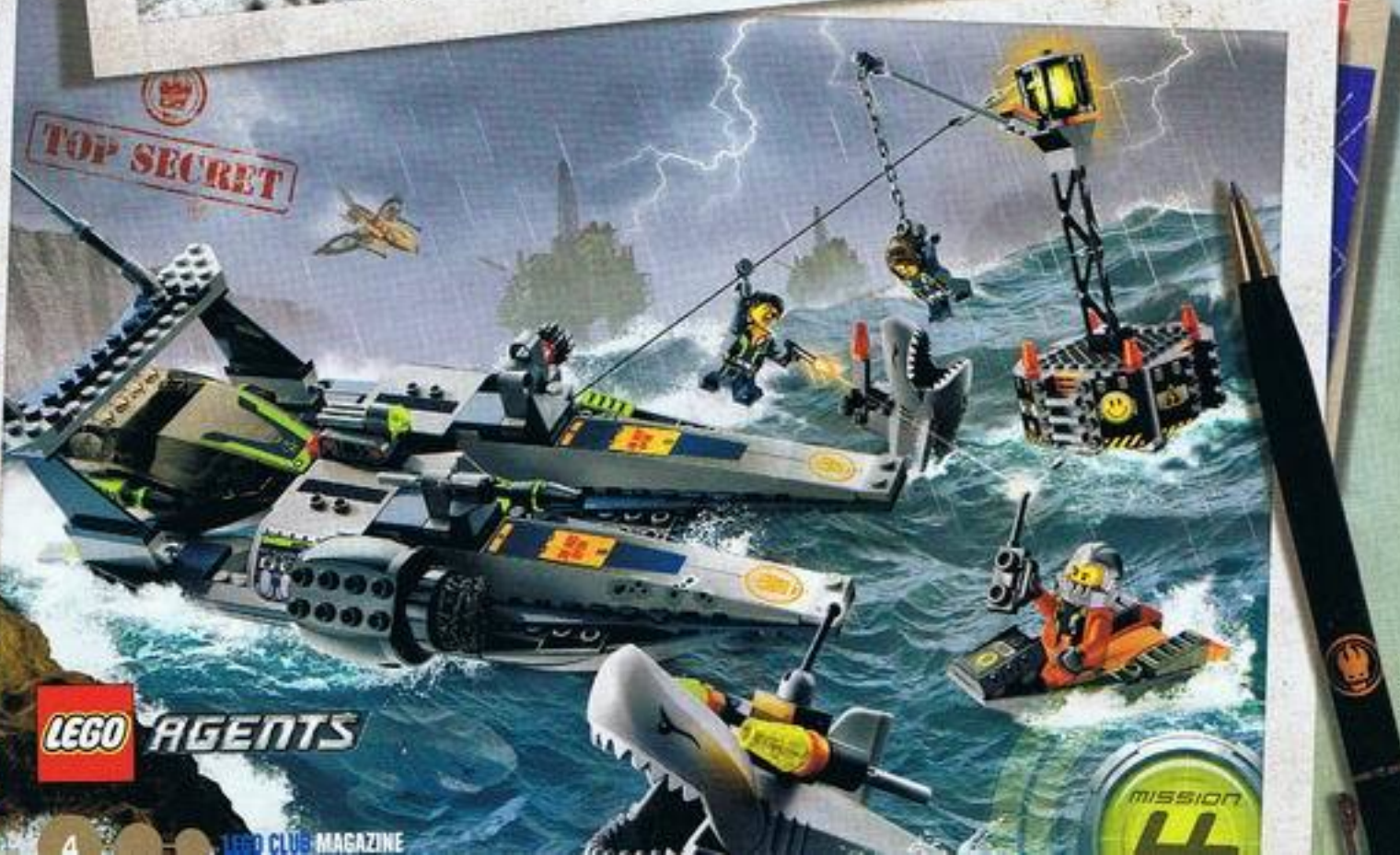
# SUPER SECRET SPEEDBOAT SURPRISE!

**W**e wanted to show you the awesome, super-Fast Agents speedboat - but the evil Dr. Inferno snuck onto this page and created a crazy copy of it! Can you spot the 10 differences between the two pictures on this page?

TOP SECRET



TOP SECRET



LEGO AGENTS

MISSION 4

ANSWERS: Lightning, jet, oil platform, speedboat markings, buoy light, buoy symbol, Agent face, shark minifig, beachman uniform, underwater shark

# MISSION: INFERNO'S LAIR!

LEGO AGENTS

DATE: CLASSIFIED  
TIME: CLASSIFIED  
PLACE: CLASSIFIED



LOCATION: THE SECRET BASE OF DR. INFERNO, EVIL GENIUS AND ATTEMPTED WORLD CONQUEROR.



DR. INFERNO'S LATEST SCHEME LOOKS LIKE REAL TROUBLE. WE DON'T KNOW EXACTLY WHAT HE'S PLANNING, BUT WE NEED TO FIND OUT FAST.



THAT'S WHY WE'VE CALLED YOU IN, AGENT CHASE.



WE NEED YOU TO INFILTRATE HIS BASE AND RETRIEVE HIS COMPUTER. THOSE FILES SHOULD TELL US EVERYTHING WE NEED TO KNOW.



OH, AND WATCH OUT FOR DR. INFERNO'S HENCHMEN. THEY'RE SPECIALLY-TRAINED AND EXTREMELY DANGEROUS.

CONTINUED ON PAGE 8...



IMAGINE

# TROLL ATTACK!

The kingdom is under attack by an army of troll warriors, and it will take all the knights of LEGO Castle to stop them! Who will come to help the knights battle this new danger? (You'll find a hint hiding on this page!)



## TROLL WARRIOR

These wicked warriors travel the world on land and sea, robbing peaceful villages of their gold everywhere they go. All they care about is loot and plunder...and fighting! Watch out for the Troll Captain, the meanest of the bunch!



## GIANT TROLL

The giant trolls from the mountains may not be very smart, but they're incredibly strong! Each one is as powerful as ten smaller trolls...or knights. If you want one to do something for you, try offering it a roasted turkey leg. Giant trolls are always hungry!



**A** cool convertible meeting a spike-tailed Stegosaurus? Why not? In the world of LEGO Creator, anything can happen. And with instructions for extra alternate models included with each set, the building possibilities are endless!



4998  
Pterodactyl

4998  
T. Rex



4993 Cool  
Convertible



4998  
Stegosaurus



4993  
Mini-  
loader



4993  
Truck



## LEGO® CREATOR BUILD-A-DINO CHALLENGE!

Use your LEGO brick collection to build a dinosaur of your very own! It can be anything from a tiny Protoceratops to a gigantic Brachiosaurus. Our 5 Favorites will appear in the November issues of LEGO Club Magazine and LEGO BrickMaster...and earn their builders a LEGO set of their choice worth up to \$100!

### TO ENTER:

- 1 Build any kind of dinosaur using pieces from your LEGO® brick collection.
- 2 Send us a color photo of your model. Only photographs and glossy photo-quality print-outs will be accepted. No Polaroids, please!
- 3 Write an essay of 50 words or less telling us about your dinosaur. What's its name? When did it live? What did it eat? How did it behave?
- 4 Include your name, age, complete mailing address and day-time phone number on your essay. Mail your photo and essay to:

LEGO® CREATOR Build-a-Dino Challenge

P.O. Box 1625

Enfield, CT 06083-1625

NO PURCHASE NECESSARY. All entries must be received by midnight EST September 1st, 2006. Offer void where prohibited or restricted by law. Models must be constructed using only LEGO® pieces. Employees of LEGO Systems, Inc. ("Sponsor") and its affiliates and subsidiaries, advertising/promotions agencies and their immediate families are not eligible to participate. Entries will be judged based on originality (40%), creativity (40%) and essay (20%). Five (5) first prize winners will be selected from all eligible entries. Estimated total retail value of each prize \$100.00. All winners will be notified by regular US mail. Sponsor reserves the right to substitute prizes of equal or greater value. LEGO Company and its affiliates and subsidiaries are not responsible for late, lost, misdirected, mutilated or damaged entries. All entries become the property of Sponsor and will not be returned. By participating in this contest, entrants agree to be bound by the official rules and decisions of the judges. By acceptance of prize, winners consent to the use of their name/likeness/entry materials in any manner by Sponsor for advertising/trade without further compensation unless prohibited by law. By accepting any prize, winners agree to hold the Sponsor harmless against any and all claims, damage, injury caused or liability related to the administration of this contest, participation in this promotion, and/or the use or redemption of a prize.

IMAGINE  
**MISSION:**  
**INFERNO'S LAIR PART 2!**

**LEGO AGENTS**



OUR BEST CHANCE FOR SUCCESS IS IF YOU CAN GET IN AND OUT WITHOUT BEING NOTICED.

IN THE UNLIKELY EVENT THAT YOU ARE DETECTED, TRY TO GET TO AN OPEN SPACE.



OUR SECRET WEAPON WILL BE WAITING FOR YOU BELOW.

THE TURBOCAR IS THE LATEST THING FROM THE LABS. YOU'LL FIND THAT IT'S FULL OF USEFUL SURPRISES.



THE REINFORCED ARMOR AND HOOD-MOUNTED LASERS SHOULD COME IN PARTICULARLY HANDY IN A JAM.



CONTINUED ON PAGE 12



**H**ey, Bikini Bottom builders! You demanded it, and you got it! Sandy's here, and she's built her very own rocket ship for even more out-of-this-world wackiness and adventures!

We spoke with LEGO senior model designer Karsten Juel Bunch about how #3831 Rocket Ride was created.



**Q:** Are you a SpongeBob fan?

**A:** I love SpongeBob, and whenever I get the chance, I watch it with my kids. At work, we have a big collection of episodes, and I have watched them over and over.

**Q:** What can you tell us about the Rocket Ride set?

**A:** It's mainly based on the "Sandy's Rocket" episode of the TV show, but we wanted to get some of the Jellyfish Fields in there, too, so we made it into a mission to catch jellyfish in outer space. Then we gave SpongeBob and his friends a moon buggy, since you need one of those on a space mission!

**Q:** How did you design the set?

**A:** We started by watching a lot of episodes, and we gathered information from the internet by reading SpongeBob forums. Then we lined up all our different ideas for models. The best 5 were presented to Nickelodeon, and together with them, we decided which ones to make into official LEGO sets. We built lots of different versions of the rocket. Then we took the best one and improved it even more to make the final LEGO model!

**Q:** What's great about the model?

**A:** I like the rocketship shape, and I think the new space suits are great. Plus, it's SANDY'S ROCKET!!! The best vehicle in all of Bikini Bottom! 🚀

Take a Rocket  
Ride Today!



**Q:** How did you get the job of designing Sandy's famous rocket?

**A:** The rocket was one of the models that we knew would be great. Another designer and I worked on test models, and luckily enough, I was the one who got to make the final one!

# ROCKET BUILDING!



© 2008 Viacom International Inc. All Rights Reserved. Nickelodeon, SpongeBob SquarePants and all related items are trademarks and/or registered trademarks of Viacom International Inc. Licensed to LEGO. Created by Stephan Hübner.

# A FORCE TO BE RECKONED WITH!

The Clone Wars have arrived! Meet the newest faces in the LEGO® Star Wars™ universe. These mighty miniFigures are ready to battle for the fate of the galaxy...and you can find them all in the latest LEGO® Star Wars™ sets! ■

## COMMANDER CODY™

Obi-Wan's trusted clone trooper commander.



## MAGNAGUARD™

IG-100 series bodyguard to General Grievous.



## AHSOKA TANO™

Anakin's new Padawan apprentice.



## ANAKIN SKYWALKER™

Hot-headed Jedi Knight and ace pilot.



## ROTTA THE HUTTLET™

Spawn of the infamous Jabba the Hutt.



## PLO KOON™

Mask-wearing Jedi High Council member.



7673 MagnaGuard Starfighter



7674 V-19 Torrent



7675 AT-TE Walker

### CLONE PILOT™

Republic V-19 Torrent starfighter pilot.



### CAPTAIN REX™

Clone Trooper Captain of the 501st Legion.



Visor

# NEW NEW NEW NEW NEW ARC TROOPER GEAR!

RangeFinder

Floodlight

Command pauldron

DC-17 hand blasters

Anti-blast kama armor



### ASAJJ VENTRESS™

Force-wielding warrior of the dark side.



### OBI-WAN KENOBI™

Wise Jedi Master and skilled general.



7676  
Republic Attack Gunship

## CLONE WARS MIDNIGHT MADNESS

Check out Midnight Madness at Toys R Us. Doors open at 12:00 AM July 26th in select Toys R Us locations.



IMAGINE

...BUT DO TRY NOT TO SCRATCH THE PAINT.

BREFF! BREFF! BREFF!  
**MISSION:  
INFERNO'S LAIR  
PART 3!**

**LEGO AGENTS**



WHATEVER HAPPENS, DON'T LOSE THAT COMPUTER!

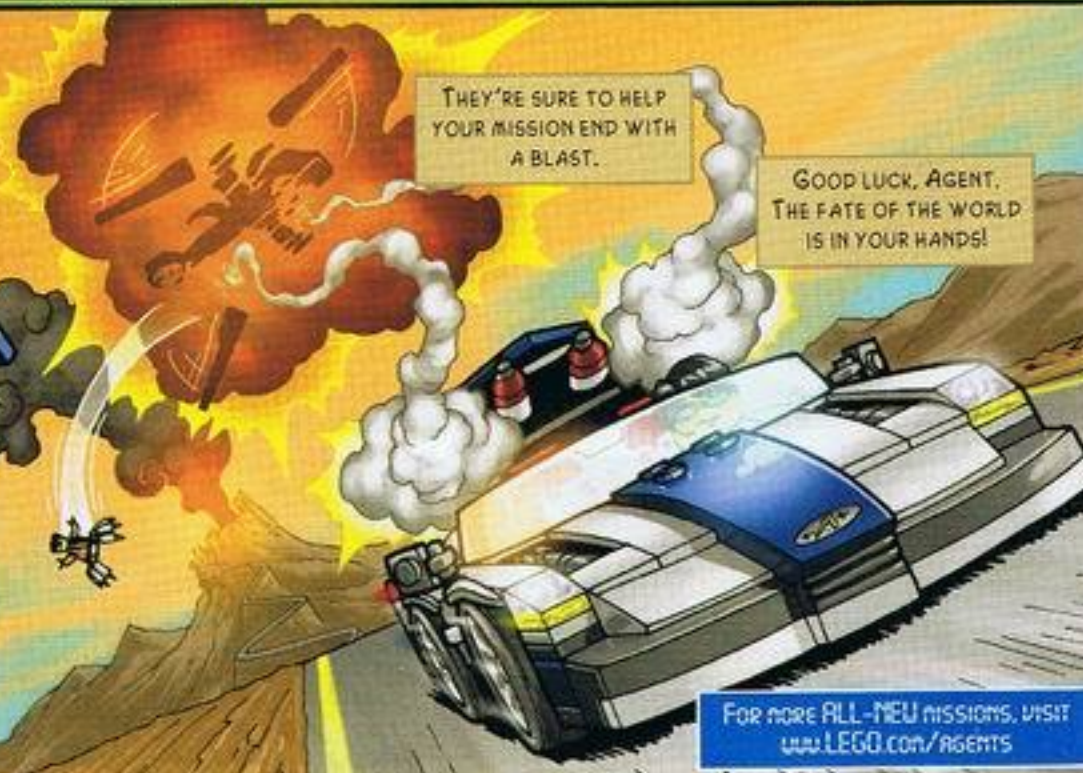
REMEMBER THAT YOUR VEHICLE COMES EQUIPPED WITH AN EJECTION SEAT IN CASE OF EMERGENCIES.



THEY'RE SURE TO HELP YOUR MISSION END WITH A BLAST.

GOOD LUCK, AGENT. THE FATE OF THE WORLD IS IN YOUR HANDS!

OH, AND DON'T FORGET THE TURBOCAR'S HIDDEN HOMING ROCKETS.



FOR MORE ALL-NEU MISSIONS, VISIT [www.LEGO.com/agents](http://www.LEGO.com/agents)

# DANGER AROUND THE WORLD!

**M** ISSION ALERT: Dr. InFerno and his evil henchmen can strike in any place, at any time. That's why the LEGO Agents are always ready to deploy anywhere around the world. Wherever the trouble is, in any environment or terrain, the Agents team and their hi-tech spy gear and vehicles are there to save the day... and the entire planet!

Check out pages 4, 5, 8 and 12 for more LEGO Agents missions...and keep checking [www.LEGO.com/Agents](http://www.LEGO.com/Agents) for top-secret details on the super-classified MISSION 6!



**ALERT** 🔥 🔥 🔥

**MISSION 2: SWAMP HUNT**  
**LOCATION: LOUISIANA, U.S.A.**

**CRISIS:** A vital map that disappeared from a government facility has been traced to a secret base deep in the swamps of Louisiana.

**WARNING:** Base is booby-trapped and guarded by cybernetic alligators!

**MISSION STATUS:** Agent deployed with rocket-cycle to locate base and retrieve map.



**MISSION 3: GOLD HUNT** -- **LOCATION: AMAZON JUNGLE, PERU**

**CRISIS:** Dr. InFerno's henchmen have stolen a payload of solid gold bars from an ancient temple hidden in the Peruvian jungle and are getting away aboard their all-terrain attack jeep.

**WARNING:** If they get away, the gold will be melted down to make InFerno's newest secret weapon!

**MISSION STATUS:** Agent in supersonic jet dispatched to intercept jeep and recover treasure.



**NEW!**  
**LEGO AGENTS**

**COLLECT ALL THE MISSIONS!**



IMAGINE

# RISE OF THE MISTIKA!

The Toa Nuva continue their Battle For Power with the Brotherhood of Makuta in the swamps of Karda Nui. But can even Nuva power, new adaptive armor, and powerful weapons overcome the greatest villains in the universe? And what will be the fate of the universe if they fail? Collect all six sets and stage your own battles for the fate of the BIONICLE world!



## Adaptive Armor

The Toa Nuva's new armor adapts to any environment, making them ready for battle wherever they go. Its flying jets keep the Toa safely in the air above the terrible waters of the swamp of secrets!



## Nynrah Ghost Blasters

The Toa weapons have adapted to be Nynrah ghost blasters, capable of firing a burst of energy which can then be shaped and controlled by the mind of the Toa into any form!



## New Kanohi Masks

Like their armor, the Toa Nuva's masks also adapt to combat in the swamp, becoming more streamlined for flight. Three new shapes!



### New Masks and Mask Powers

The Mistika Makuta control the powers of Disruption, Duplication, and Repulsion, making them among the toughest foes the Toa have ever fought!



### Nynrah Ghost Blasters

Wielding the original ghost blasters, the Makuta can use them to take control of anything mechanical - including the body of a Toa! - for a limited period of time!



### Insectoid Armor

The Makuta shapeshifted to look like monstrous insects of the swamp. But they couldn't know the waters of the swamp would mutate them so that they would have those forms forever!

For more information on the Mistika,  
check out [www.BIONICLE.com](http://www.BIONICLE.com)!

BIONICLE

IMAGINE

# ICE CREAM CHAOS!

WEE-OOO!  
WEE-OOO!

ALARM! THE JOKER HAS ESCAPED ARKHAM ASYLUM!

AND WHAT'S THIS? THE CLOWN PRINCE OF CRIME GOING INTO THE ICE CREAM BUSINESS?

HA HA HA!

I SCREAM, YOU SCREAM -

EVERYONE SCREAMS FOR THE JOKER'S ICE CREAM! HA HA HA!



# BATMAN



LEGO and all related characters and elements are trademarks of and © DC Comics. WB BANNER TM and © Warner Bros. Entertainment Inc. (2011)



BATMAN™ IS ON THE CASE, AND ON THE CHASE, IN HIS NEW TUMBLER!



BATMAN™ CLOSES IN FOR THE CAPTURE!

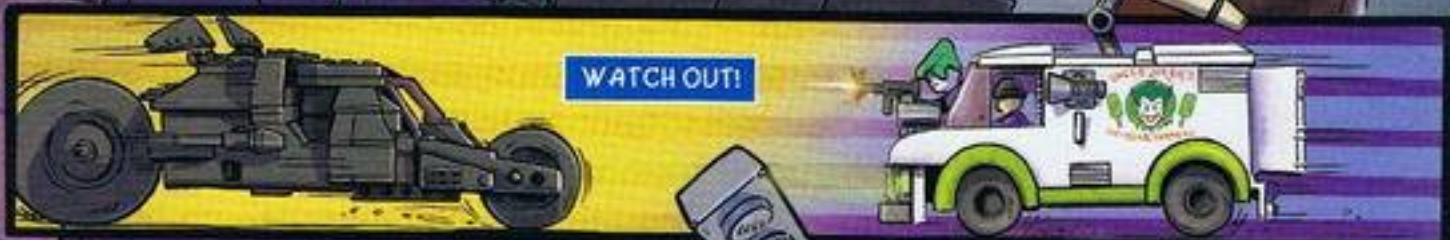


THE JOKER'S ICE CREAM TRUCK SUDDENLY SPINS AROUND, HEADING RIGHT FOR THE TUMBLER!

GET YOUR TOOTSI-FRUITSI ICE CREAM, BATMAN! HA HA HA!



WATCH OUT!



**KA-BAMMM!**



UH OH! THE CRASH HAS MERGED THE TUMBLER AND ICE CREAM TRUCK INTO A WHOLE NEW VEHICLE!

Hmmm...

WHY DIDN'T I THINK OF THAT?

ALWAYS PREPARED.

BATMAN'S ANTI-COMBO CONTROL TURNS THE JOKER'S DOUBLE SCOOP SPECIAL BACK INTO THE BATMOBILE AND THE JOKER'S ICE CREAM TRUCK AGAIN!

THERE!  
AND NOW FOR THE JOKER!

HOO HOO!  
I HAVE TO GET ONE OF THOSE BUTTONS!

THE CHASE IS ON AGAIN!

BUT NOT FOR LONG!

\*YOU'LL FIND BUILDING STEPS FOR THE JOKER'S DOUBLE SCOOP SPECIAL AT [WWW.LEGOCLUB.COM](http://WWW.LEGOCLUB.COM).

clubcode  
BATMODEL

[www.LEGO.com/batman](http://www.LEGO.com/batman)

WHO WILL WIN?  
BATMAN™ OR THE  
YOU DECIDE!

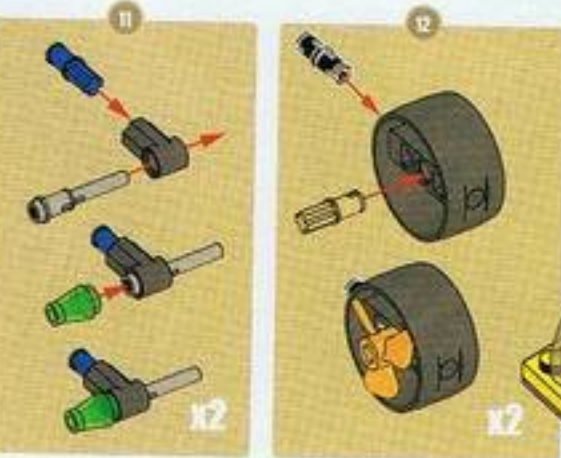
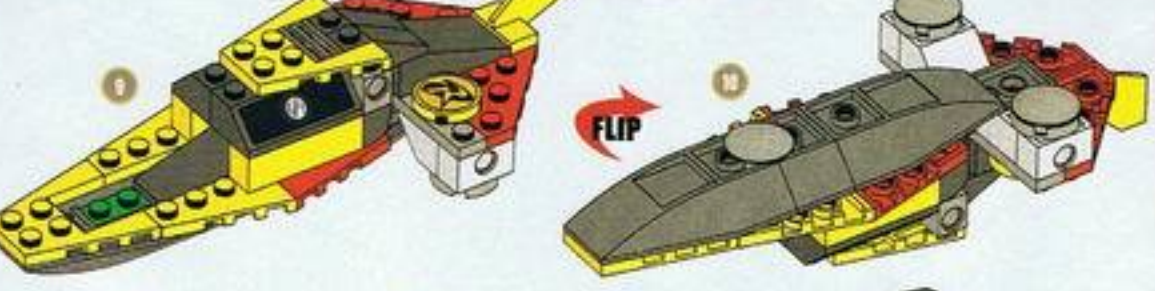
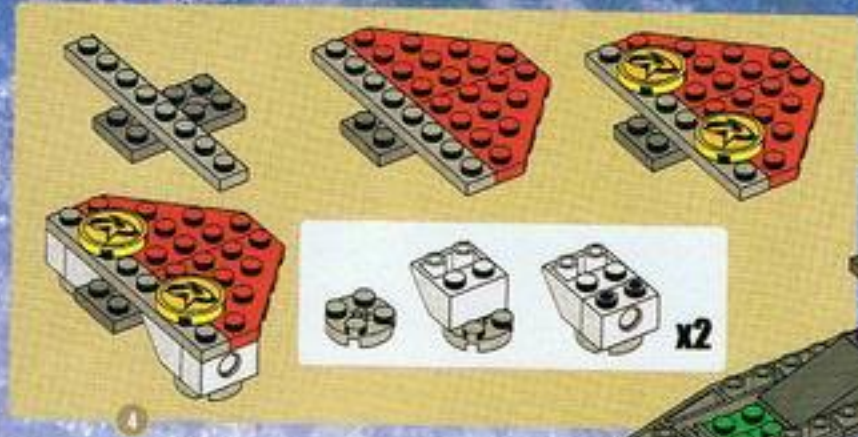
BUILD



# BUILD THE REDBIRD VTOL AERO-CAR!

**W**hen Robin™ has an adventure in the air, he uses his Redbird VTOL Aero-Car! Equipped for vertical take-offs and landings (VTOL) and high speed maneuvers, this mini-plane is up to any challenge!

Build the Redbird VTOL Aero-Car using pieces from #7885 Robin's Scuba Jet: Attack of The Penguin™. ■



LEGO and all related characters and elements are trademarks of and © DC Comics, WB, DC, TM and © Warner Bros. Entertainment Inc. (2008)



# MARS TECH 2.0!



## ETX ALIEN INFILTRATOR

Only Alien Commanders have the intelligence and skill to pilot these stealthy, multi-mode strike-ships that can convert from flight to terrain walker modes.

"Our radar doesn't even pick these things up. That's bad enough when they're flying and blasting at you, but there's nothing scarier than seeing a whole attack squad walking up over the edge of a crater."

Bio-Organic antigravity propulsion drive

Neo-Xenic strike rockets

Primary Olax-beam emitters

Blast dispersion spines

Stabilizer vanes

ARMOR: Unknown low-friction stealth hybrid composite

It's a quantum leap in the battle for Mars! The newest alien attack ships can convert from land to flight modes, creating double the trouble for our brave astronaut team. Even worse, they're piloted by Alien Commanders, a new breed of even bigger, tougher, and smarter invaders. To fight back, our astro-engineers have come up with a fleet of amazing vehicles with incredible multi-mode technology. Look out, aliens, because we've got a few new surprises of our own!

Access ramp for Mini-Rover

Vrapex proton-accelerator cannons

T-REX-65 external mechanical arms

High-powered hover turbines

TakSteel rock-cutting blades

Crystal collection drive-train system

Robotic mining suit (comes with ETX Alien Infiltrator)

Can operate under pilot control or by remote.

Mini-Rover (comes with MT-61 Crystal Reaper)

## MT-61 CRYSTAL REAPER

Massively armored all-terrain mining vehicle built to harvest energy crystals while under alien attack. Control cockpit, weapon and robotic arms detach as a flying recon fighter.

"The aliens used to make short work of our mining gear. Not any more. The Crystal Reaper is a giant monster of a mobile mining tank, and those spinning saws and mechanical arms are equally good at collecting energy crystals and smashing up alien tech."

Reinforced ultra-titanium treads