

Nov-Dec 2006



magazine

EXO-FORCE

Go inside the
Sentai Fortress!

MINDSTORMS NXT tips

How to program
a better bot!

STAR WARS™

Secrets of Jabba's
Sail Barge!

PARENTS!

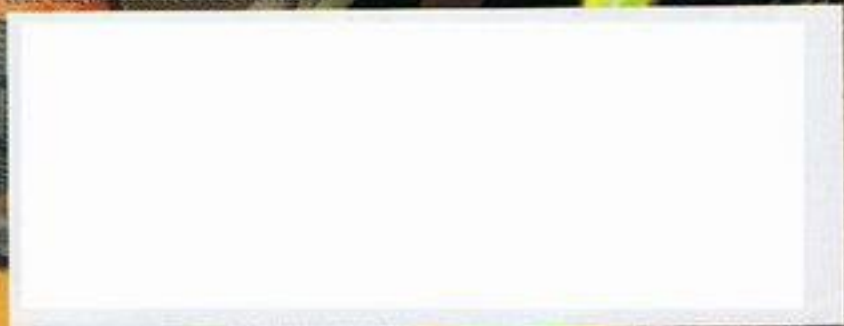
Special Holiday Offer!

See page 30 for details.

LEGO club

Presorted Standard
U.S. Postage
PAID
LEGO Direct

LEGO Club, P.O. Box 1152, Enfield, CT 06033-1152





LEGO EXO-FORCE

ATTENTION! EXO-FORCE!
I, SENSEI KEIKEN, AM HERE TO BRIEF YOU ON THE FEATURES AND DEFENSES OF SENTAI FORTRESS, YOUR HEADQUARTERS. PAY CLOSE ATTENTION! YOUR KNOWLEDGE OF THIS BASE MAY MEAN THE DIFFERENCE BETWEEN VICTORY AND DEFEAT FOR MANKIND!



Magnetic Transport
Travel rapidly from one point in the Fortress to another using these two-man magnetic transports.



Repair Bay
Battle machines like the Silent Strike are built and repaired here with the help of the mobile crane arm and the latest technology. Although Ryo or I usually supervise this area, Hikaru likes to make sure work on his battle machine is done right.



Central Command Station
Large enough to hold two EXO-FORCE members, this is the defense and communications center of the Fortress. From the computers here, we can monitor the entire base and its surroundings for robot threats. Hand weapons and ammunition are also stored in this tower.



Regeneration Station
Pilots who are ill or injured are brought here to be treated by our laser healing ray. Our battle machines aren't the only things that need to power up!



Magnetic Transport
The magnetic transport can also be used to transport weapons and ammunition around the Fortress.



Destroyer Disk Launcher
An effective weapon against the robots, this launcher can sweep from side to side to track and respond to enemy targets.



Phase Laser Cannon
Manned by Takeshi, this was specially designed to damage Thunder Fury armor.

Visit www.EXO-FORCE.com
For more insider information

BUILT FOR SPEED

the Ferrari F1 Racer 1:8



Introducing the **first-ever** 1:8 scale LEGO Ferrari F1 Racer. Bigger, faster, sleeker and with more authentic details than ever before, this super-realistic replica of the Scuderia Ferrari F1 race car is the ultimate model for any Ferrari or racing fan to build and display. ■

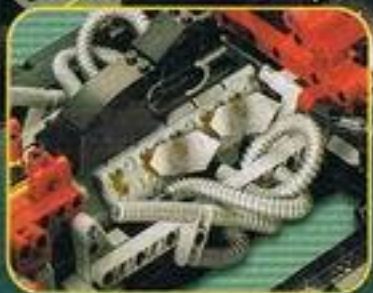
- Scuderia Ferrari was Founded by Enzo Ferrari in 1929.
- Ferrari first competed in a Formula 1 race in 1950.
- The Ferrari logo is a rearing black stallion on a yellow field.
- Real dimensions: 4545 mm long, 1796 mm wide, 959 mm tall

Authentic labels and sponsor logos

8674 Ferrari F1 Racer 1:8



• The LEGO Ferrari model has a working steering system to handle tight racetrack curves.



• Remove the engine cover on the model to reveal moving pistons.



• The model includes details like real working front and rear suspension.



• Remove the spoiler and nose for even more detail.

Ferrari

OFFICIAL LICENSED PRODUCT



Model measures over 61cm long!

Ferrari, all associated logos and the distinctive designs are trademarks of Ferrari S.p.A. The body of the Ferrari car is protected as Ferrari property under trade dress and/or design regulations.



RACERS



LEGO

EXO-FORCE

THIS IS SENTAI FORTRESS. IT'S THE WELL-DEFENDED AND HEAVILY ARMED HOME BASE OF EXO-FORCE. NO ROBOT HAS EVER BREACHED ITS WALLS.

NOW, CALMLY, HIKARU, TELL ME AGAIN WHAT YOU SAW OUT THERE.

BUT ITS STRENGTH IS ABOUT TO BE CHALLENGED!

IN THE REGENERATION STATION...



IT WAS THE ROBOTS' NEW BATTLE MACHINE. IT'S HUGE, IT'S INCREDIBLY POWERFUL, AND IT'S ON ITS WAY HERE.

"THE STRIKING VENOM IS COMING, AND IT'S COMING FAST!"

CHOOM! CHOOM! CHOOM!

THE HUMAN DEFENDERS LEAP INTO ACTION!

ROBOT STRIKE FORCE, CONVERGE ON SENTAI FORTRESS. THE HUMANS CANNOT STOP US THIS TIME.

SHRAAK! SHRAAK! SHRAAK!

ALL PILOTS TO YOUR BATTLE MACHINES! MAN COMBAT STATIONS! YOU MUST PROTECT THE FORTRESS AT ALL COSTS!



THE SILENT STRIKE'S REPAIRS ARE DONE. TIME TO POWER UP!



DRONE TROOPS, DEPLOY! SENTAI FORTRESS WILL FALL BEFORE THE MIGHT OF THE STRIKING VENOM!



NOT IF WE HAVE ANYTHING TO SAY ABOUT IT. EXO-FORCE, GO!

THERE'S NO END TO THESE GUYS!

THEN WE'LL JUST HAVE TO FIGHT HARDER!



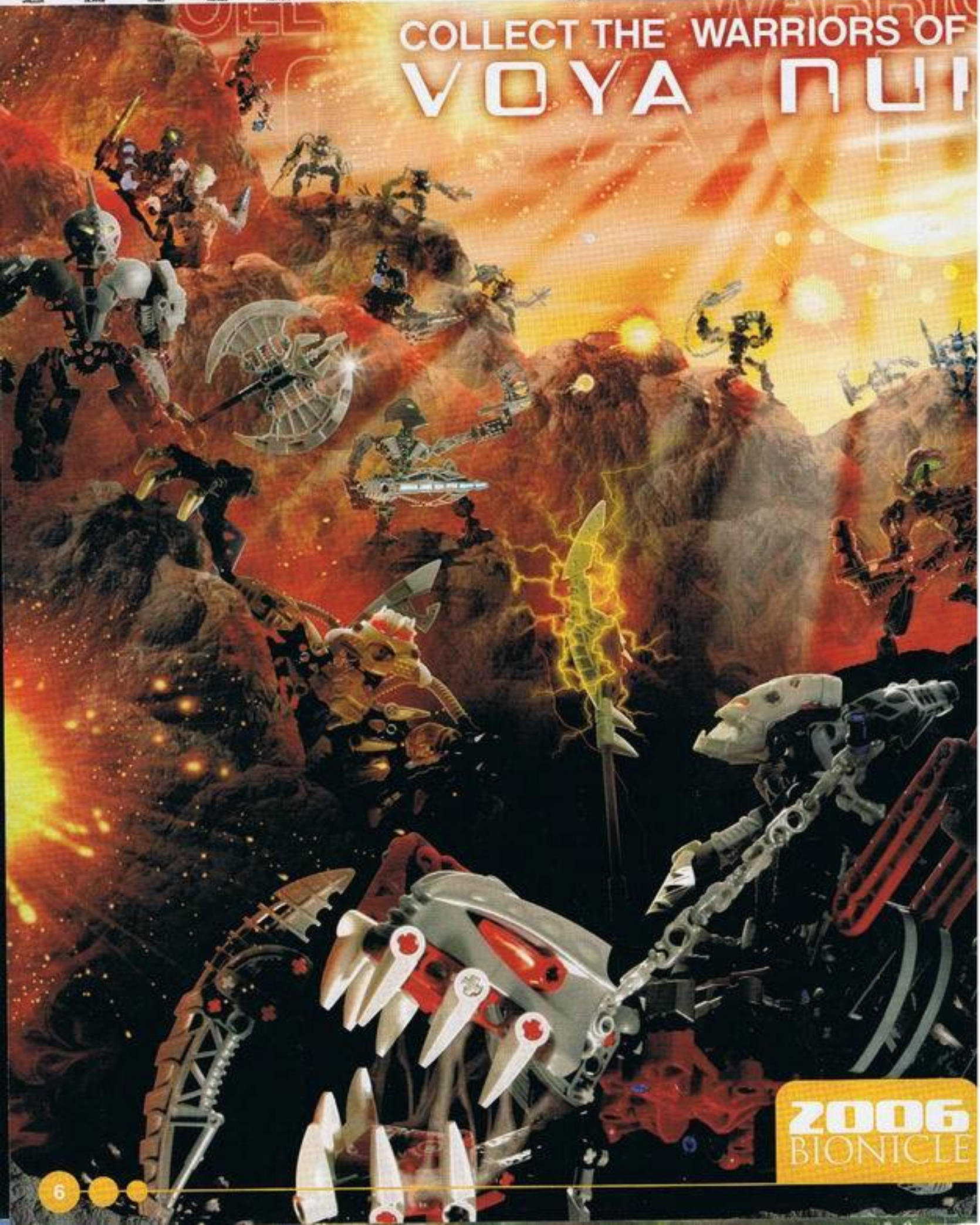
FOOLISH HUMAN. HOW CAN YOU HOPE TO STOP THE STRIKING VENOM?

LOOKS LIKE WE'RE BOTH ABOUT TO FIND OUT!

FOR MORE EXO-FORCE ACTION, VISIT WWW.EXO-FORCE.COM



COLLECT THE WARRIORS OF VOYA NUI



2006
BIONICLE

MAXIMUM POWER!

LEGO RACERS

The LEGO Power Racers are comin' at ya! These Fast and Furious speedsters are roaring with racing power, but that's not all – using their pull-back motors, each Power Racer can perform its own unique stunt! From wheelies to donuts to ramp-jumping to side-riding, there's no end to the high-speed thrills. ■



8669
Fire Spinner 360

Side Rider 55 and Fire Spinner 360 combine to make a two-engine mean machine!



8668
Side Rider 55



8670
Jump
Master



8667
Action Wheelie



Jump Master and Action Wheelie combine to make a twin-engine monster racer!

Get Ready for an All-NEW
lineup of LEGO Racers.

CRASHING

Your way in 2007!

BIONICLE® HEROES HITS STORES!



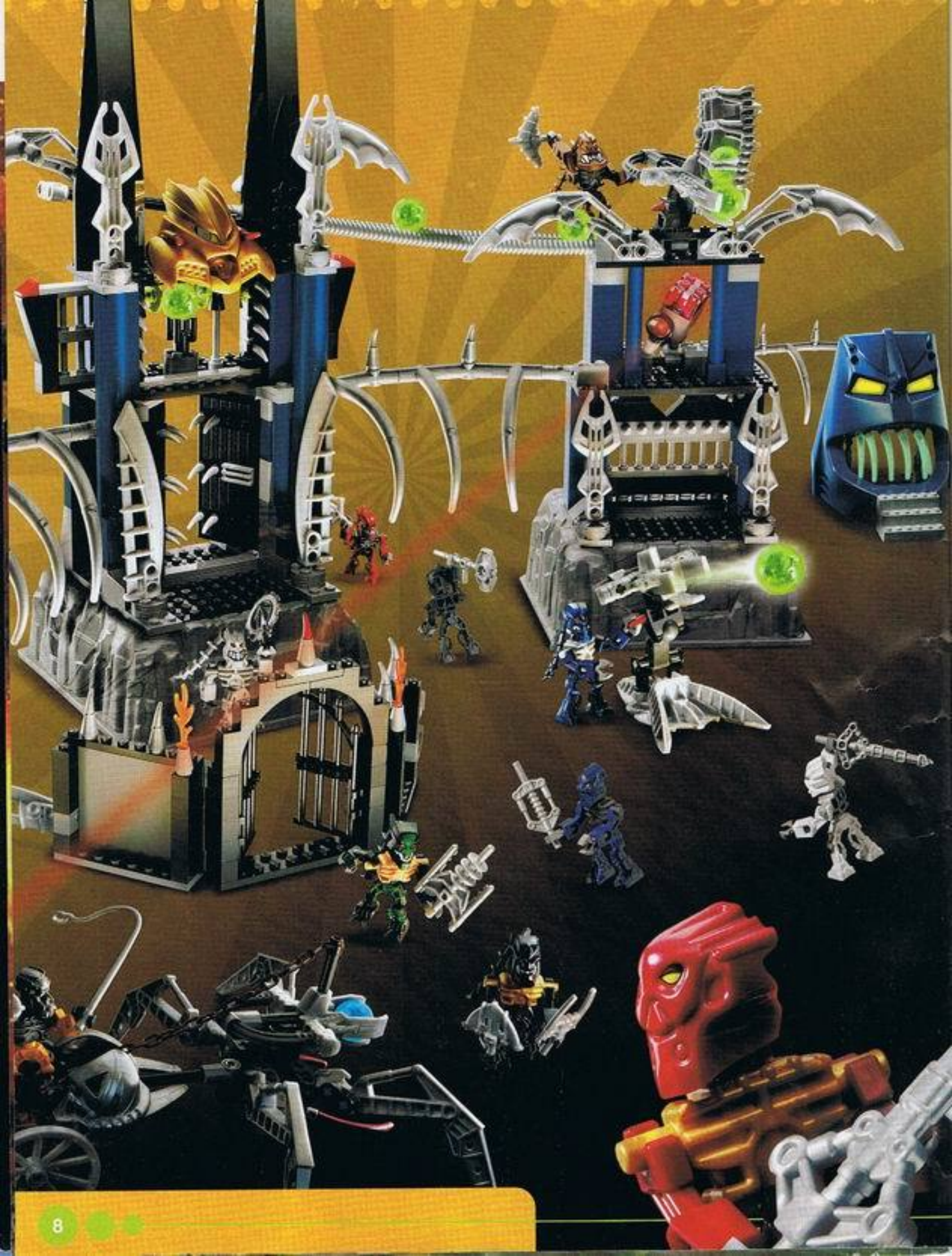
New BIONICLE® Fans all around the world can fulfill their wildest dreams of adventure with the BIONICLE HEROES video game, from the makers of the smash hit LEGO® Star Wars™: The Video Game series. ■

"This game is all about having lots of fun and interacting with the different characters in the BIONICLE universe," said game producer Luke Valentine. "We've created a really exciting and challenging gameplay experience that will appeal not only to BIONICLE fans but also to gamers everywhere."

The game features 25 beautifully designed levels set across 6 huge interactive elemental zones: Water, Air, Fire, Ice, Earth and Stone. Conquer these zones one by one to unlock 19 boss characters who are out to stop you.

BIONICLE HEROES will be in stores this month for PlayStation 2, Nintendo Game Cube, PC, Nintendo DS and GameBoy Advance.





BEHIND THE BRICKS:

Secrets of the Piraka Stronghold



AN INTERVIEW WITH
MODEL DESIGNER
TORBEN SKOV



Ever wonder what goes into designing a BIONICLE battleset like the Piraka Stronghold? So did we – so we went to the expert, LEGO Model Designer Torben Skov!

Torben works in Billund, Denmark, global headquarters of The LEGO Company, and has been designing models for 20 years. He's been on the BIONICLE team for two years, after spending time designing models for LEGO City, Life on Mars, Sports, and Knights' Kingdom, among others.

What does it take to be a LEGO set designer? Patience, skill with and knowledge of LEGO elements, and most of all, creativity and imagination. Most set designers have backgrounds in art, architecture, or design.

Designing a model like Piraka Stronghold isn't as easy as you might think, because it's much more than just putting pieces together. First, the designer must know all about the universe he is working in – in this case, BIONICLE. What fits and what doesn't? How would a stronghold built by Piraka look?

After that's decided, the real work begins. "Elements must be developed," says Torben. "Models must be digitalized and elements counted before you can build for the first time." It's important to know how many new pieces a model will require, because that affects how much extra work will go into producing it and what it will cost to make.

Once the pieces have been decided on and approved, the model starts getting tested. Some of these are product safety tests, others are groups of fans. A typical BIONICLE fan test group consists of fans from ages 8-12, some who own a lot of BIONICLE sets and some who own only a few. They are asked to give their opinion of every aspect of the model and

whether or not it is something they would want to own. Based on what comes out of these meetings, designers may need to go back and make changes. If the focus tests come back positive, then work can start on any decorations needed for the pieces.

"Right now, I'm working on next year's BIONICLE sets, but they are secret, of course."

- Torben (LEGO)

After that is done, building instructions are made and artists get to work designing the packaging you see in the store. As for Torben, he is on to his next big design project. So what is he working on now?

"Right now, I'm working on next year's BIONICLE sets," he says. "But they are, of course, secret."

Working on super-secret BIONICLE models ... sounds like a fun job, doesn't it? ■



MINI-FIGURE MADNESS!

The Piraka Stronghold set features 12 new mini-figures – six Toa Inika and six Piraka! All the figures have been redesigned since 2005, so that they now feature moving parts and masks that more closely match the action figures.



FEHRAK ON THE LOOSE!

Adding a cool vehicle to a playset can be a challenge. The LEGO designers solved it by creating a Fehrak, a spider-drawn chariot for the Toa – and introduced wheels into the BIONICLE universe!



LAUNCH THE ZAMOR SPHERES!

One way to make a set like this be into the other ones in the line is to use similar elements, especially weapons. Torben used a Toa Inika's zamor launcher for the stronghold's tower launcher – with the characters at mini-figure scale, the launcher goes from being a hand-held weapon to a massive zamor cannon!

"Designing a model like Piraka Stronghold isn't as easy as you might think, because it's much more than just putting pieces together. How would a stronghold built by Piraka look?"



LEGO

NICKELODEON

降世神通

AVATAR

THE LAST AIRBENDER.

QUEST For the AIR TEMPLE!

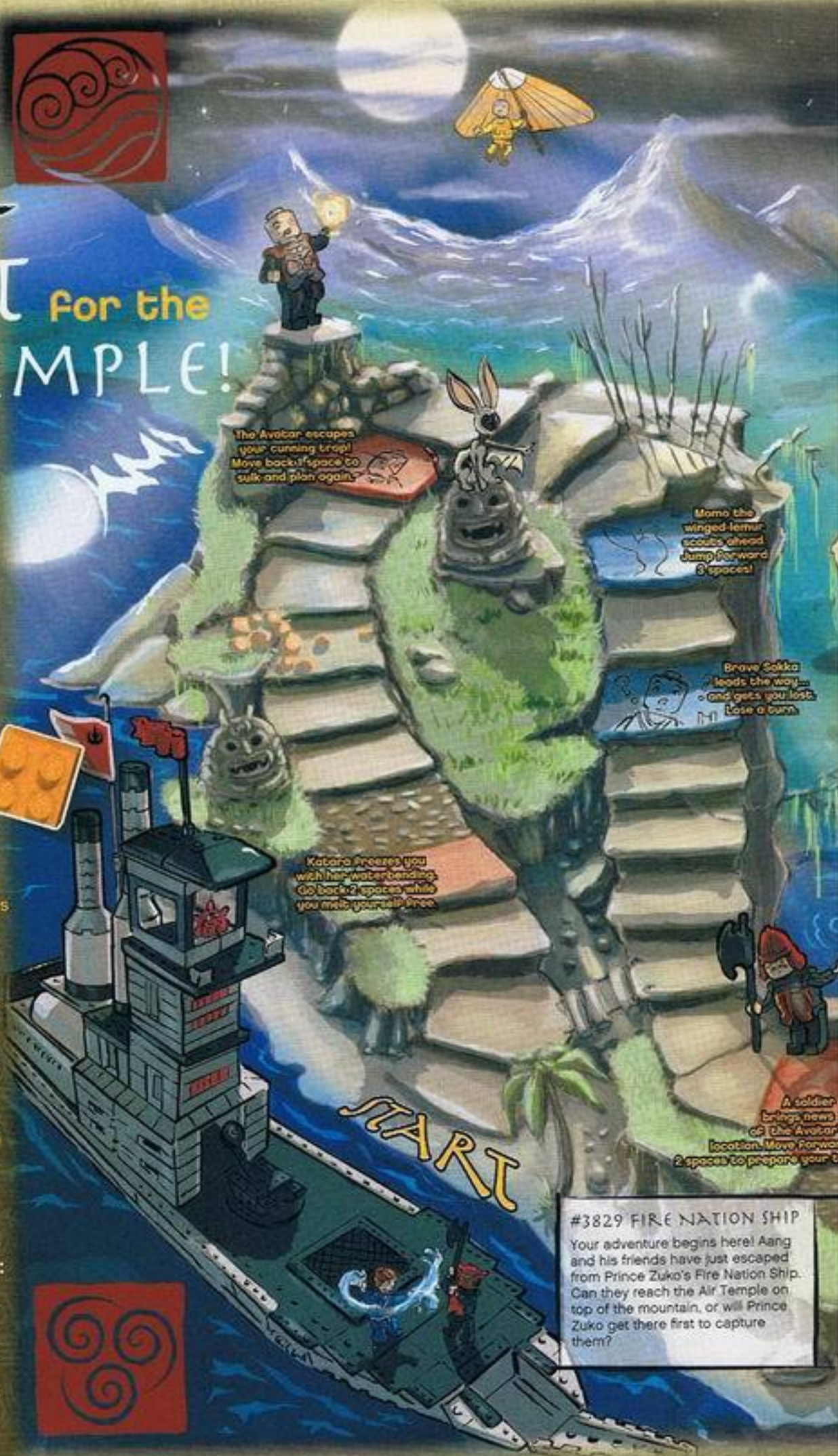
Aang and his friends are in a race against Prince Zuko to reach the Air Temple at the mountain's top! Challenge a friend, choose your side, and get ready to adventure in the world of the Avatar.

"Quest for the Air Temple" is a game for 2 players.

- Each player picks a side: Aang the Avatar, or Prince Zuko of the Fire Nation.
- Use LEGO Avatar minifigures or any other LEGO piece to play. You will also need a 2x2, 2x4 or 2x6-stud LEGO brick to roll.
- Roll the LEGO brick to see who goes first. Whoever has the highest number (see below) is the first to play. If it's a tie, both players roll again.
- Take turns rolling the brick and moving across the board. If you land on a space with instructions for your side (blue for Aang, red for Prince Zuko), do what it says. If you land on a blank space or a space for the other side, your turn is over.
- Whoever climbs the mountain and reaches the Air Temple first is the winner!

Rolling the LEGO brick:

- If the brick lands with studs facing up, move 1 space.
- If the brick lands with studs facing down, move 2 spaces.
- If the brick lands on its side, move 3 spaces.



The Avatar escapes your cunning trap! Move back 1 space to sulk and plan again.

Momo the winged lemur scouts ahead. Jump forward 3 spaces!

Brave Sokka leads the way... and gets you lost. Lose a turn.

Katara freezes you with her water-bending. GO back 2 spaces while you melt yourself free.

A soldier brings news of the Avatar's location. Move forward 2 spaces to prepare your troops.

START

#3829 FIRE NATION SHIP

Your adventure begins here! Aang and his friends have just escaped from Prince Zuko's Fire Nation Ship. Can they reach the Air Temple on top of the mountain, or will Prince Zuko get there first to capture them?

#3828 AIR TEMPLE

You've reached the top! The secrets of the Air Temple are yours. Now try switching sides and playing again!



Melt the ice with the power of firebending and advance 3 spaces!

Aang finds his glider! Avoid the Fire Nation and soar ahead 2 spaces.

Maybe you shouldn't have used so much fire in the snow. Lose a turn while you dry off!

Aang gains the power of the Avatar state! Move ahead 3 spaces.

You build a lime-ball catapult and right off the Fire Nation! Move ahead 1 space.

Wow! The winged-temur gets distracted by food. Go back 1 space.

Your loyal firebender blaze a trail to the top. Move forward 1 space.

Construct a Fire Nation tank and roll forward 3 spaces. Oh so victory!

Avalanche! Move back 2 spaces and don't whistle so loudly next time.



Bricks in Motion!

LEGO CREATOR

You may not believe your eyes, but these LEGO models really move! These motorized masterpieces are ready for you to build, play with, and use to impress family and friends. Create a helicopter with a rotor that spins, a bumper car that changes direction when it hits an obstacle, or a creepy crawling spider - and more!

What can YOU create with Motion Power, and how will you make it move?

Motion Power Fun Facts!

- The first functional helicopter was built in 1901. It flew less than two feet above the ground!
- Spiders can detect their prey by sensing vibrations on the ground or in their webs!



- The first motor vehicle, constructed in 1894, could only move forward!



Crawling Spider



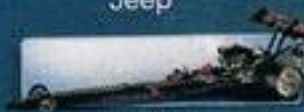
Bumper Car



Are high-speed sports cars more your style? Take a spin with the Roaring Roadster convertible, with seats that recline and doors that open. But watch out - this roadster's so fast, you might get stopped for speeding while you're putting it together! When you're done, you can rebuild it into a drag racer or a jeep...or create an all-new vehicle of your very own!



Jeep



Dragster

LEGO Creator Building Challenge!

Wouldn't it be great if there was a vehicle that could move on land, in the air, and under the sea? Here's your chance to build one! Construct a vehicle designed to work on the ground, in the sky and in the water and you could be one of five winners of a LEGO set of your choice worth up to \$100!

To Enter:

1. Build a model of a vehicle that works on land, in the sea, and in the air using pieces from your LEGO collection.
2. Write an essay (no more than 100 words) with the name of your vehicle and how it works.
3. Take a color photo of your model and send it or a high quality computer printout on photo paper (no Polaroids, please), along with your essay, to the address below. Please include your name, age, address and phone number.

Send Entries to:
LEGO Creator
Building Challenge
PO Box 1625
EnField, CT 06083

For complete rules, visit
www.LEGO.com/club

All entries must be received by January 3, 2007!

Deep in the desert of Tatooine, the crime lord Jabba the Hutt is about to throw Luke Skywalker and Han Solo to the ravenous Sarlacc monster below. Their friends Lando Calrissian and Princess Leia have a plan to help them escape... but they'll need R2-D2 to do it! Can you help them find where the little droid is hiding on this page? ■

Secrets of Jabba's SAIL BARGE

SAIL BARGE FAST FILE

VEHICLE TYPE:

Ubrikkian luxury sail barge

OWNER:

Jabba the Hutt

ARMAMENT:

Turret-mounted laser cannon

POWERED BY:

Antigravity repulsorlift, wind

FEATURES:

Positionable sails, prison cell, fully-stocked kitchen, throne chamber

SECURITY PROVIDED BY:

Boba Fett

ESCORT VEHICLE:

Prisoner transport skiff



Launch Boba Fett into action!



6210
Jabba's Sail Barge

Visit www.LEGO.com/STARWARS for more!

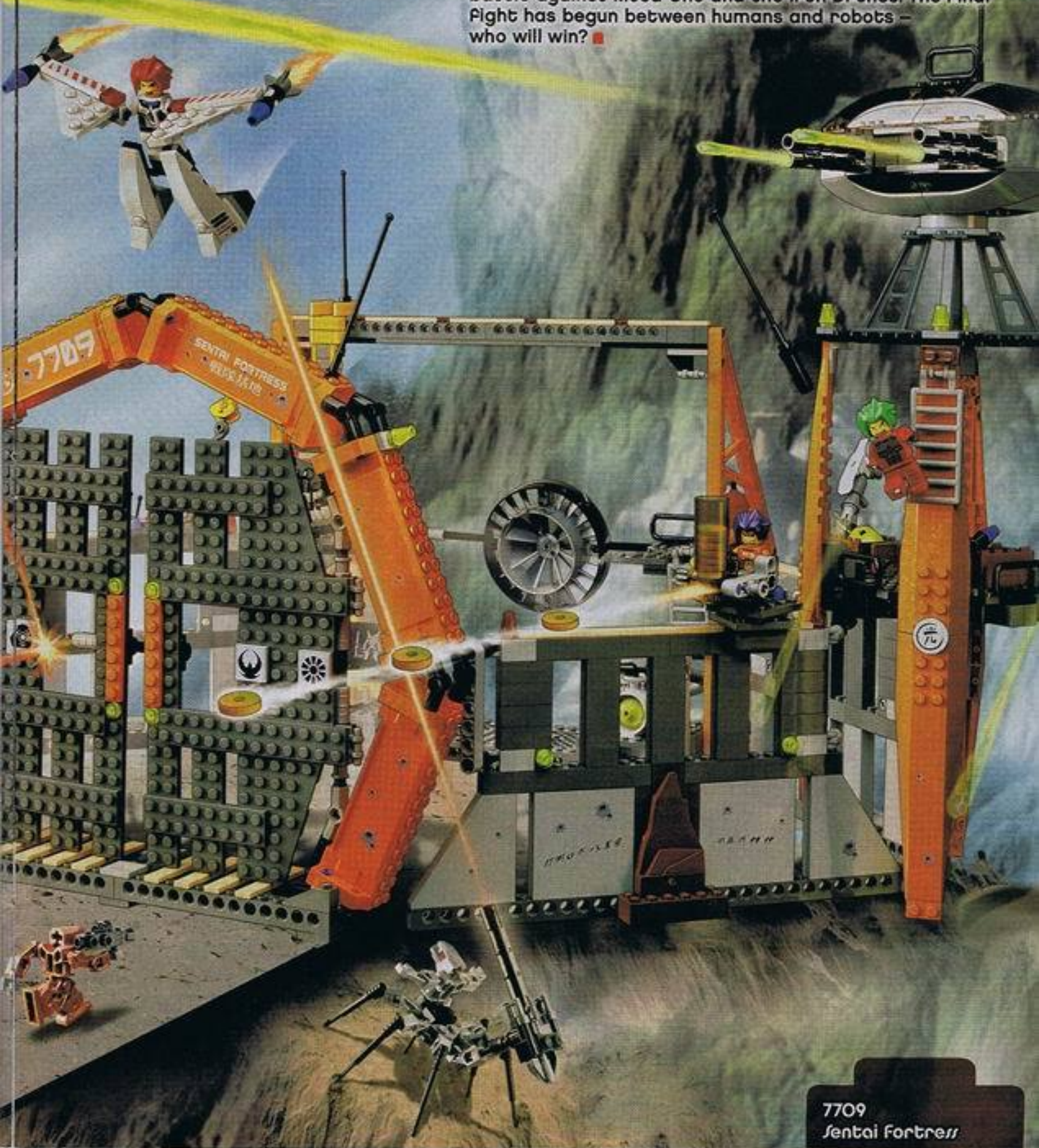


© 2006 LucasFilm Ltd. & TM.
All rights reserved.



SENTAI FORTRESS

Headquarters of EXO-FORCE, Sentai Fortress is heavily fortified against a robot attack. Wall-mounted lasers and destroyer disk launchers keep the enemy at bay, while Hikaru pilots the stealthy and powerful Silent Strike into battle against Meca One and the Iron Drones. The Final Fight has begun between humans and robots – who will win? ■



7709
Sentai Fortress

BIONICLE Super Stronghold

Look For a list



Stronghold of Light
Jacen Kórinak Stevers, age 13



LEGO MINDSTORMS NXT

Building Challenge WINNERS



NXT Milk Mixer Bot 2
Nicholas LaJolie, age



Bot-thoven
Jason Kolbush, age 11



LEGO Pinball Machine
Brian Hague, age 12

Building Challenge WINNERS

of BIONICLE Piraka Trivia Contest winners on www.BIONICLE.com



Inika Fire Fortress
Rachtel Newkirk, age 11



Inika Ultra-Defense Stronghold
Dalton F. Saruelo, age 8



Inika Defense Colossus
Steven Bosch, age 12



The Flaming Fortress
Connor Barnhart, age 13

Got an awesome model of your own you would like to see in Cool Creations? Then send your photos to:



Cool Creations
P.O. Box 1308
EnField, CT 06083-1308

Remember to include your name, address and the name of your model. No Polaroids please! Pictures will not be returned, so remember to take an extra photo for yourself!



CREATURE
FROM THE
KRUSTY KRAB

Bikini Bottom will never be the same!



Available for your Favorite videogame systems October 2006



PlayStation 2

NINTENDO DS

Wii

GAME BOY ADVANCE

NINTENDO GAMECUBE



Visit www.thq.com for updated rating information

DISASTER!
THE INMATES
HAVE TAKEN
OVER GOTHAM
CITY'S ARKHAM
ASYLUM!

Asylum SINISTER!

THE SCARECROW

HEE HEE! IF BATMAN
COMES, WE'LL SHOW HIM A
FRIGHTFULLY GOOD TIME!

WHOOOSSSS!

THE RIDDLER

RIDDLE ME THIS: WHEN IS A
CELL DOOR NOT A CELL DOOR?

WHEN IT'S AJAR!

POISON IVY

THE DARK KNIGHT HAS
BEEN A WEED IN MY
GARDEN LONG ENOUGH!

A MYSTERIOUS SIGNAL FLASHES IN THE NIGHT, SUMMONING THE
ONLY HERO WHO CAN DEFEAT THIS VILLAINOUS TEAM.



LEGO

BATMAN

THE BATMAN

WELCOME TO ARKHAM ASYLUM, BATMAN - WE'RE SURE YOU'LL LIKE IT HERE.

IN FACT, YOU'LL NEVER LEAVE!

CRASH!
CRASH!
CRASH!

CRASH!
CRASH!
CRASH!

BOOM!

CAN BATMAN DEFEAT HIS ARCH-FOES AND SAVE GOTHAM CITY? YOU DECIDE!

www.LEGO.com/Batman

LEGO, the LEGO logo, Batman, and the Batman logo are trademarks of DC Comics. © 2008 DC Comics. All rights reserved.





LORD VLADEK AND HIS ROGUE KNIGHTS ARE ATTACKING THE TOWER! CLOSE THE GATE!



FIRE! KING JAYKO AND HIS KNIGHTS WON'T STAND IN MY WAY THIS TIME.



I'LL HOLD THEM OFF WHILE YOU GET THE SHIELD OF AGES!

BATTLE FOR THE MISTLANDS TOWER!

Hidden deep in the heart of the Mistlands of Morcia, the Mistlands Tower holds a magical prize for any knight brave enough to climb to the top. Who will be the first to capture its power? ●

LEGO

KNIGHTS' KINGDOM

DEFEND THE TOWER SAVE THE KINGDOM